

Sandpiper Community Center

Address: 797 Redwood Shores Parkway, Redwood City , CA 94065, USA

Venue: Conference Room on ground level

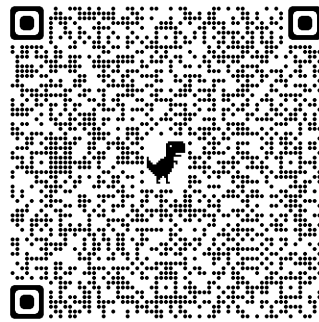
Phone: 1-650-780-7323

www.redwoodcity.org

Sandpiper Community Center map

<https://goo.gl/maps/S1KJZC6gMxzMh2JEA>

QR Code of Sandpiper Community Center map



Parking

There are 95 free parking spaces outside Sandpiper Community Center.



Public transportation to Sandpiper Community Center

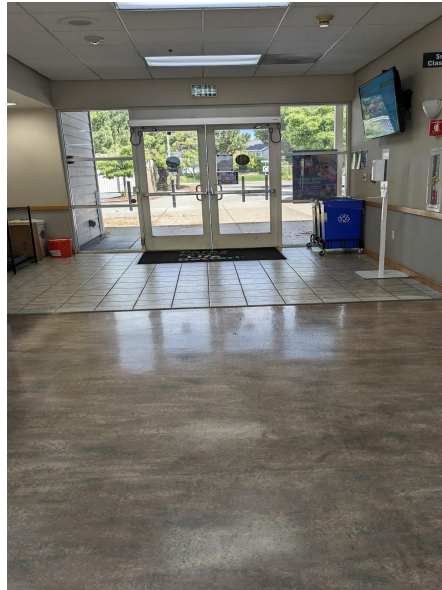
The closest Caltrain station to Sandpiper Community Center is Belmont Caltrain station. Please see the following suggested public transportation route to get to Sandpiper Community Center from Belmont Caltrain station.

<https://goo.gl/maps/ySKDAyVeu3LbvK9W9>

Main entrance from outside



Main entrance from inside



Conference Room



Driving Direction to Sandpiper Community Center

From the North Bay:

1. Take US-101 South to San Jose.
2. Use the right 2 lane and take Exit 411 for Brittan Ave.
3. Keep right at the fork, follow signs for Redwood Shores Pkwy/Air Museum/Holly St
4. Merge onto Holly St.
5. Continue onto Redwood Shores Pkwy for 1.8 miles
6. Turn left onto Sandpiper Community Center when you see Governors Bay Drive on your right.

From the South Bay:

1. Take US-101 North to San Francisco.
2. Take exit 411 toward Redwood Shores Pkwy.
3. Merge onto Holly St.
4. Continue onto Redwood Shores Pkwy for 1.8 miles.
5. Turn left onto Sandpiper Community Center when you see Governors Bay Drive on your right.

From the East Bay:

1. Take CA-92 West to San Carlos.
2. Take exit 13A to merge onto US-101 South toward San Jose.
3. Use the right 2 lanes to take exit 411 for Brittan Ave.
4. Keep right at the fork, follow signs for Redwood Shores Pkwy/Air Museum/Holly St.
5. Merge onto Holly St.
6. Continue onto Redwood Shores Pkwy for 1.8 miles.
7. Turn left onto Sandpiper Community Center when you see Governors Bay Drive on your right.